

# **CORC Outcomes Report Summary Service A February 2009 produced by CORC central team**

Tel 0207 443 2218 or email [corc@annafreud.org](mailto:corc@annafreud.org)

# Key Info

**373 records from Service A 2007-2008 .**

**33417 records from Rest of CORC.**

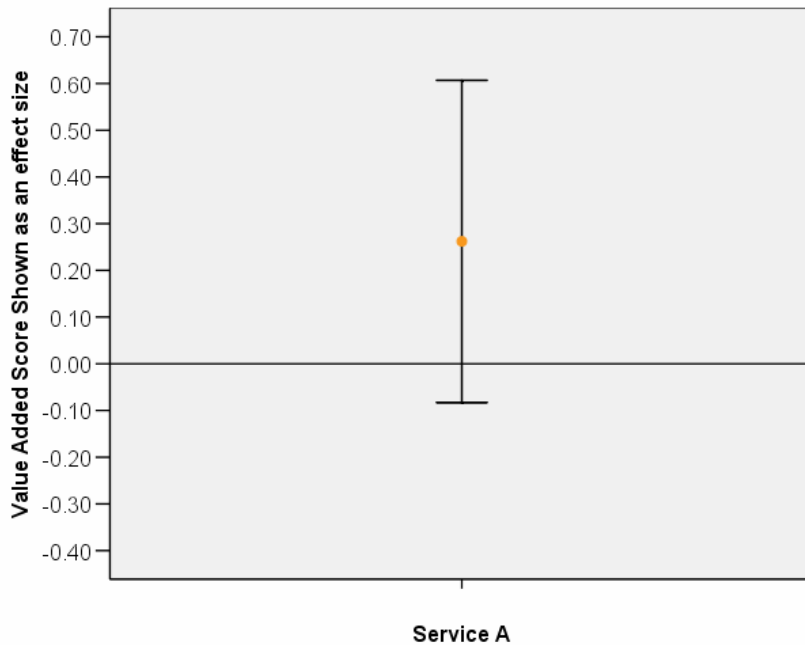
- This is a brief summary, see full report for full details
- Always seek to triangulate data - and ask how does this fit with other things you are finding out about the service?

# Impact of Service – (SDQ) Added Value Score

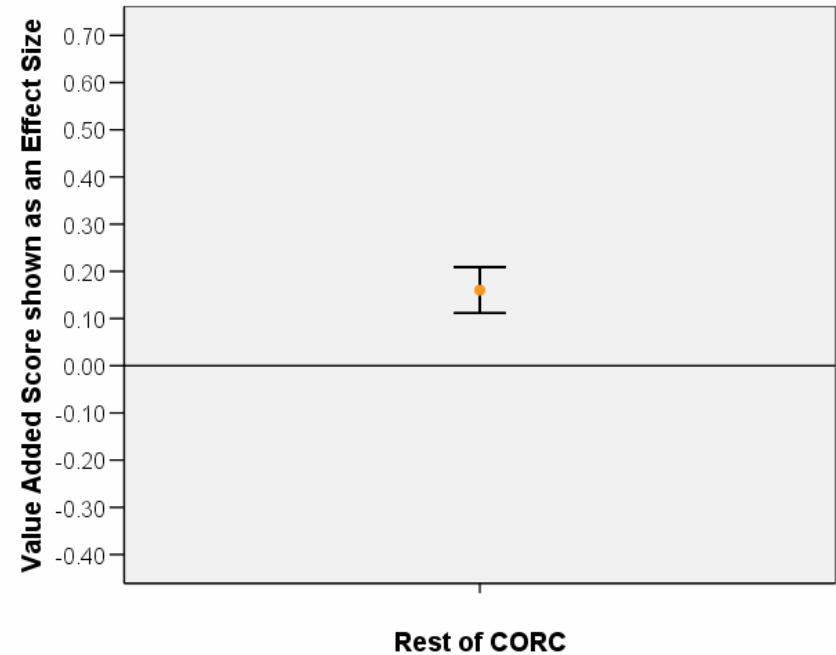


**WEAK DATA:**  
Interpret with  
caution

Service A N=47



Rest of CORC N=2150



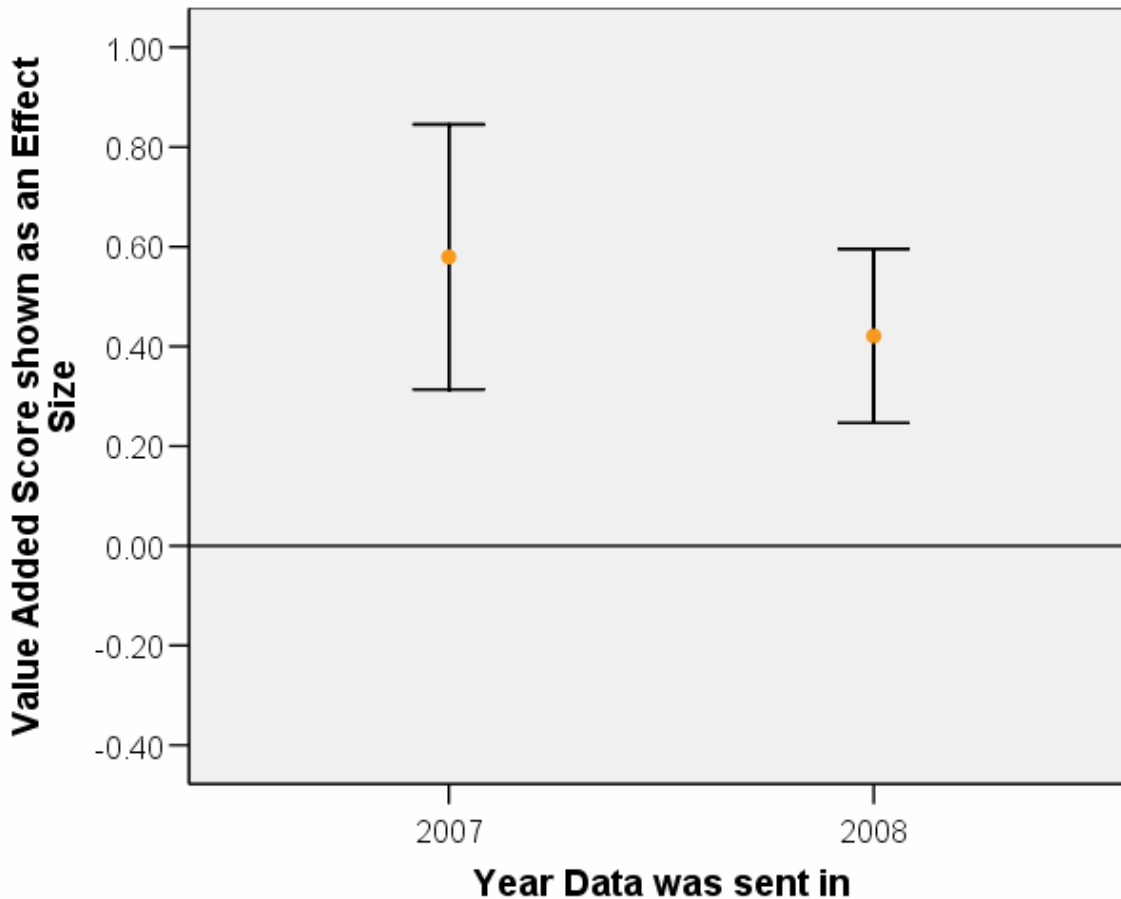
[Interpreting data](#)  
[Response rates](#)  
[Accuracy of data](#)

# Impact of Service – (SDQ) Added Value Score by Year

Service A  
N=47



**WEAK DATA:**  
Interpret with  
caution

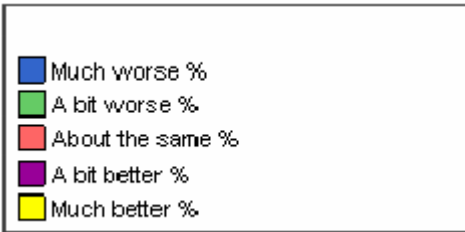




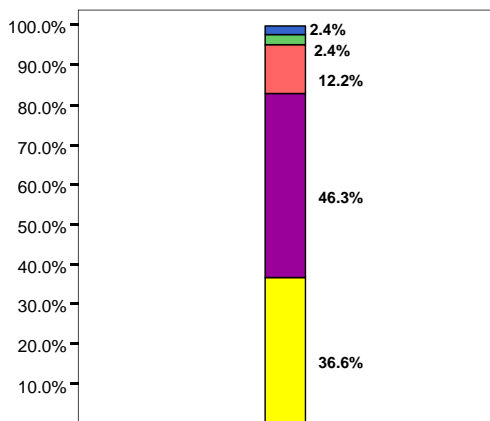
# Change in difficulties SDQ- 6 months later

**PARENT View** - "Since coming to the clinic, how are your/your child's difficulties now?"

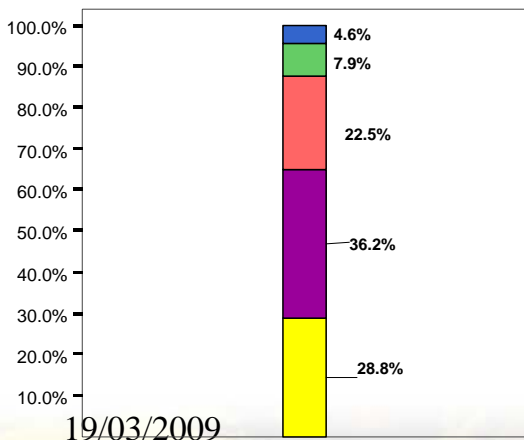
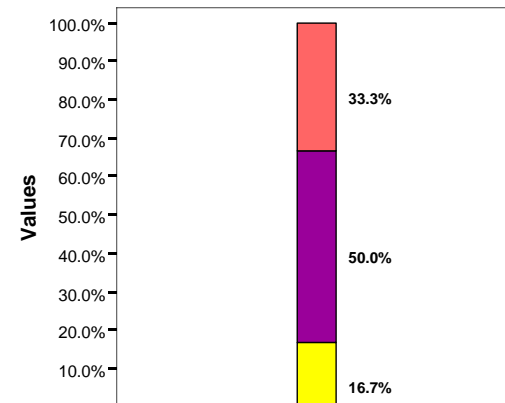
**CHILD View** - "Since coming to the clinic, how are your/your child's difficulties now?"



Service A N=41

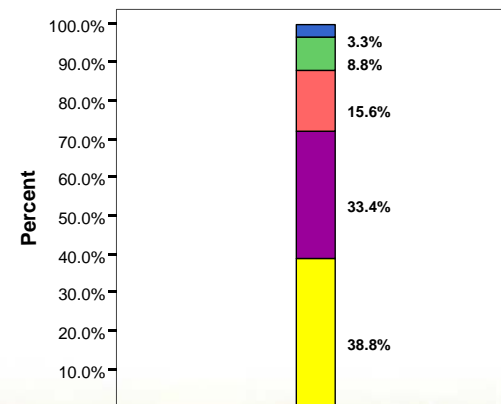


Service A  
N=10



Rest of CORC  
N= 2694

Rest of  
CORC  
N=569



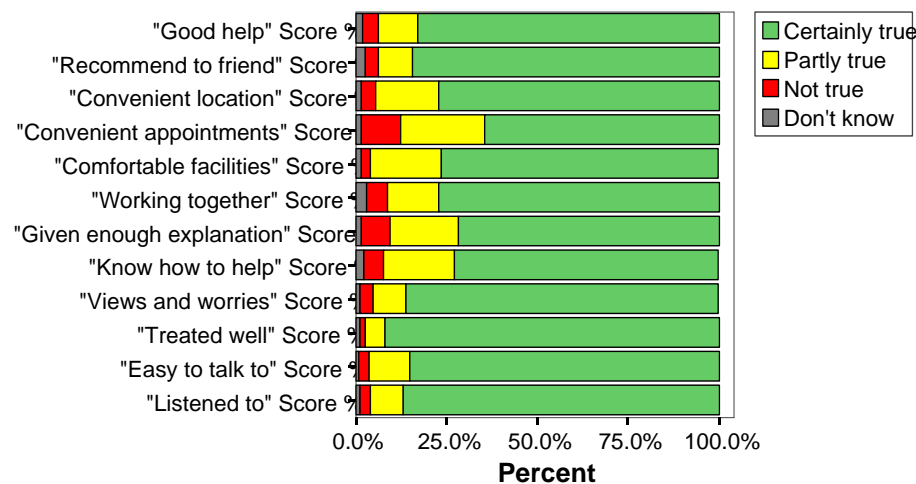
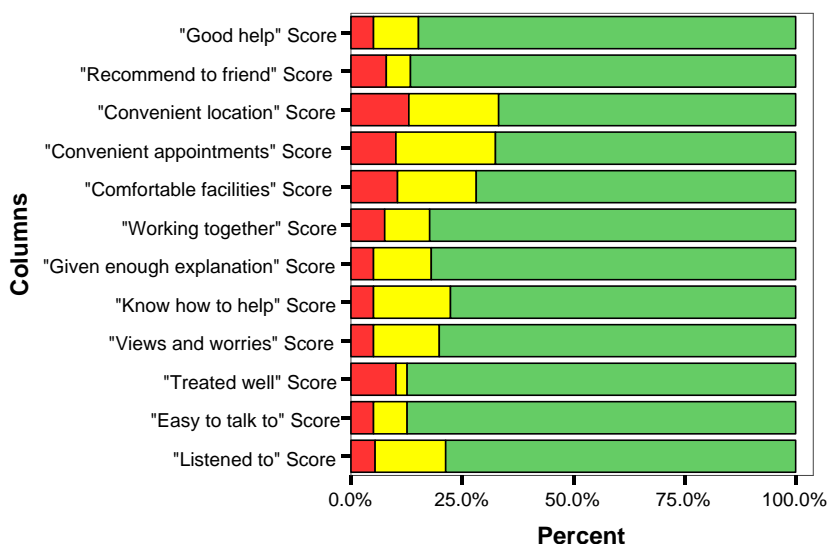
# Satisfaction with Service Parent Perspective (CHI-ESQ)

**WEAK DATA:**  
Interpret with caution



Service A \*N=40

Rest of CORC \*N=1544



19/03/2009

\* There are a range of Ns for each item, please see [table](#)

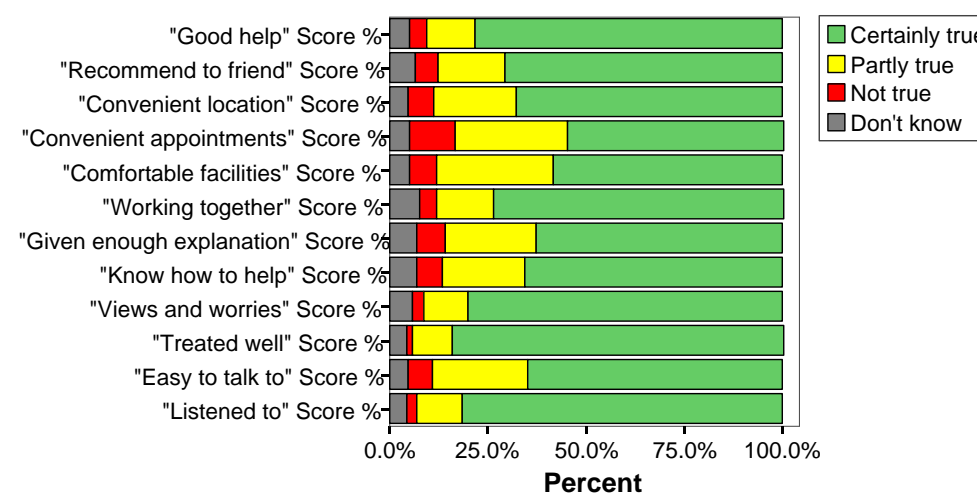
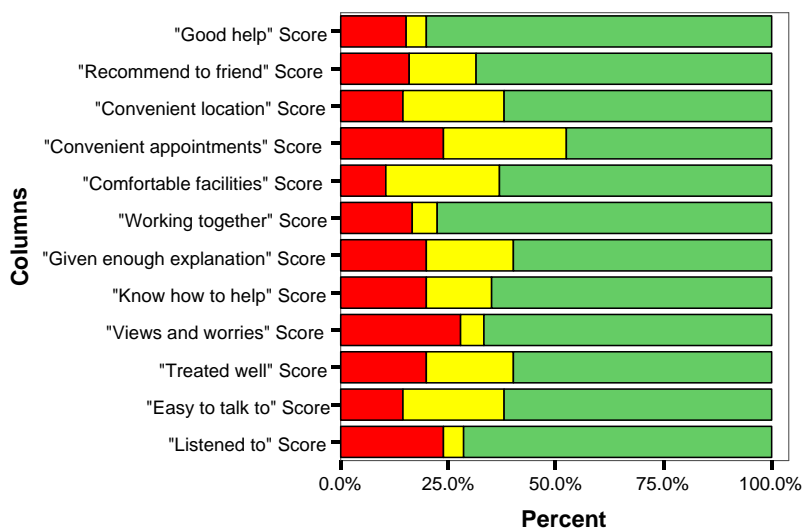
# Satisfaction with Service *Child* Perspective (CHI-ESQ)

**WEAK DATA:**  
Interpret with caution



Service A \*N=21

Rest of CORC \*N=876



# Difficulties at Outset and Change in difficulties 6 months later (CGAS)

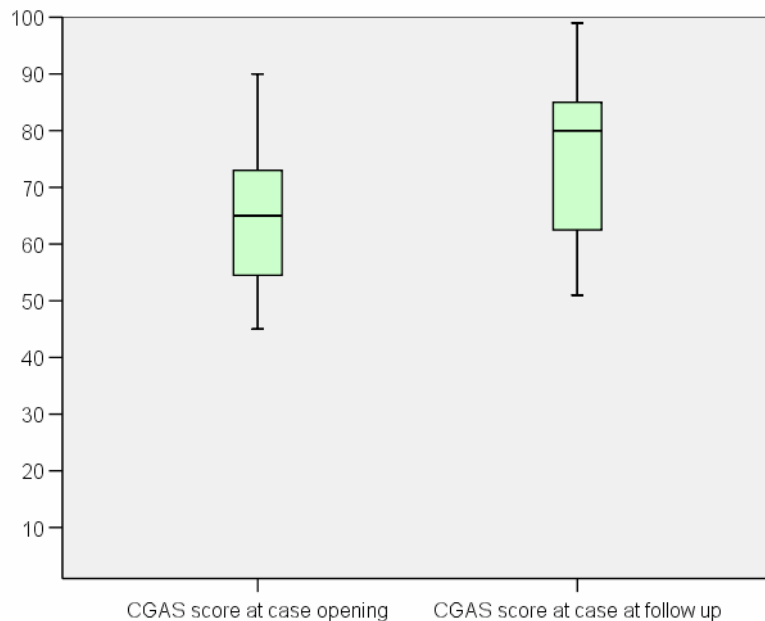
**PRACTITIONER** View

**WEAK DATA:**  
Interpret with  
caution



[About Box Plots](#)

Service A N=31 (completion of *both* Time 1 and Time 2 CGAS)



Rest of CORC N=1530 (completion of *both* Time 1 and Time 2 CGAS)

