

CORC Outcomes Report Summary

All CORC

November 2009

produced by CORC central team

Tel 0207 443 2218 or email corc@annafreud.org

Key Info

62015 records from All CORC.

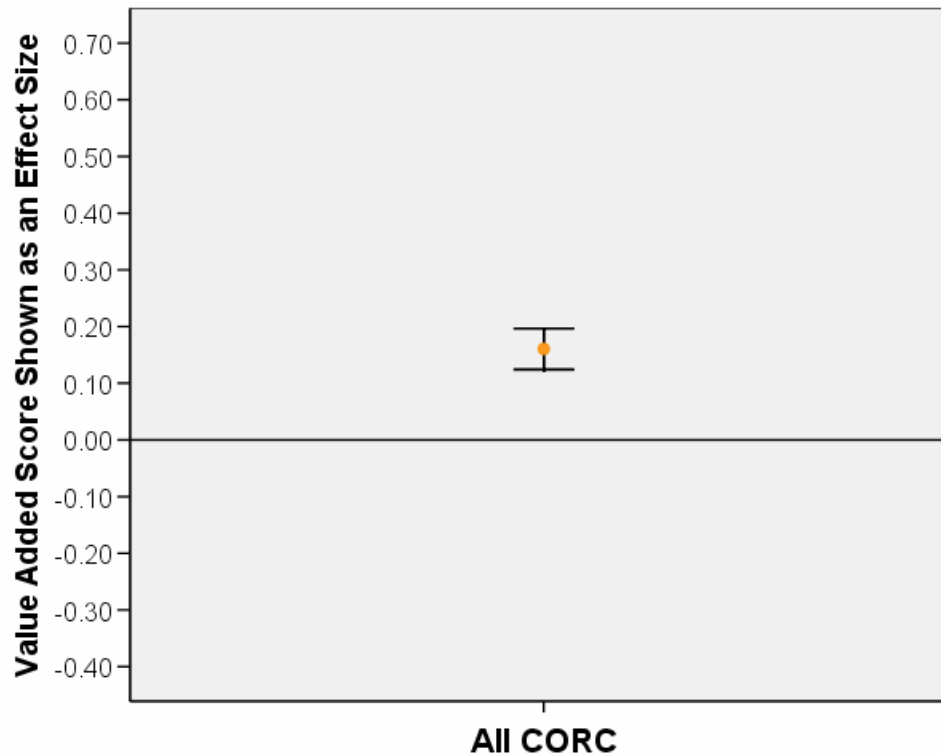
- This is a brief summary, see full report for full details
- Always seek to triangulate data - and ask how does this fit with other things you are finding out about the service?

Impact of Service – (SDQ) Added Value Score



WEAK DATA:
Interpret with
caution

All CORC N=3958



[Click here for table](#) 3

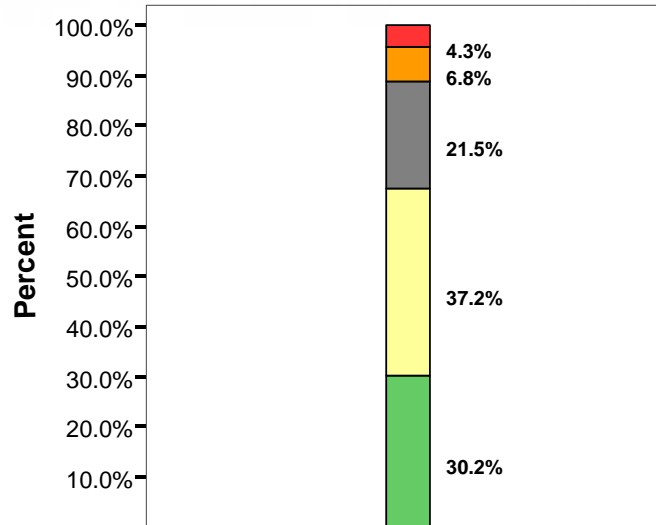


**WEAK DATA:
Interpret with
caution**

Change in difficulties SDQ- 6 months later

PARENT View - "Since coming to the clinic, how are your/your child's difficulties now?"

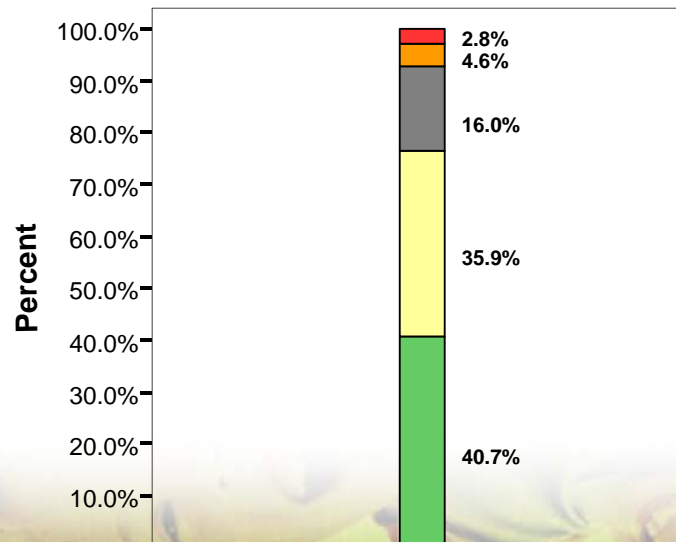
All CORC
N= 6064



- Much better
- A bit better
- About the same
- A bit worse
- Much worse

CHILD View - "Since coming to the clinic, how are your/your child's difficulties now?"

All CORC
N=3107



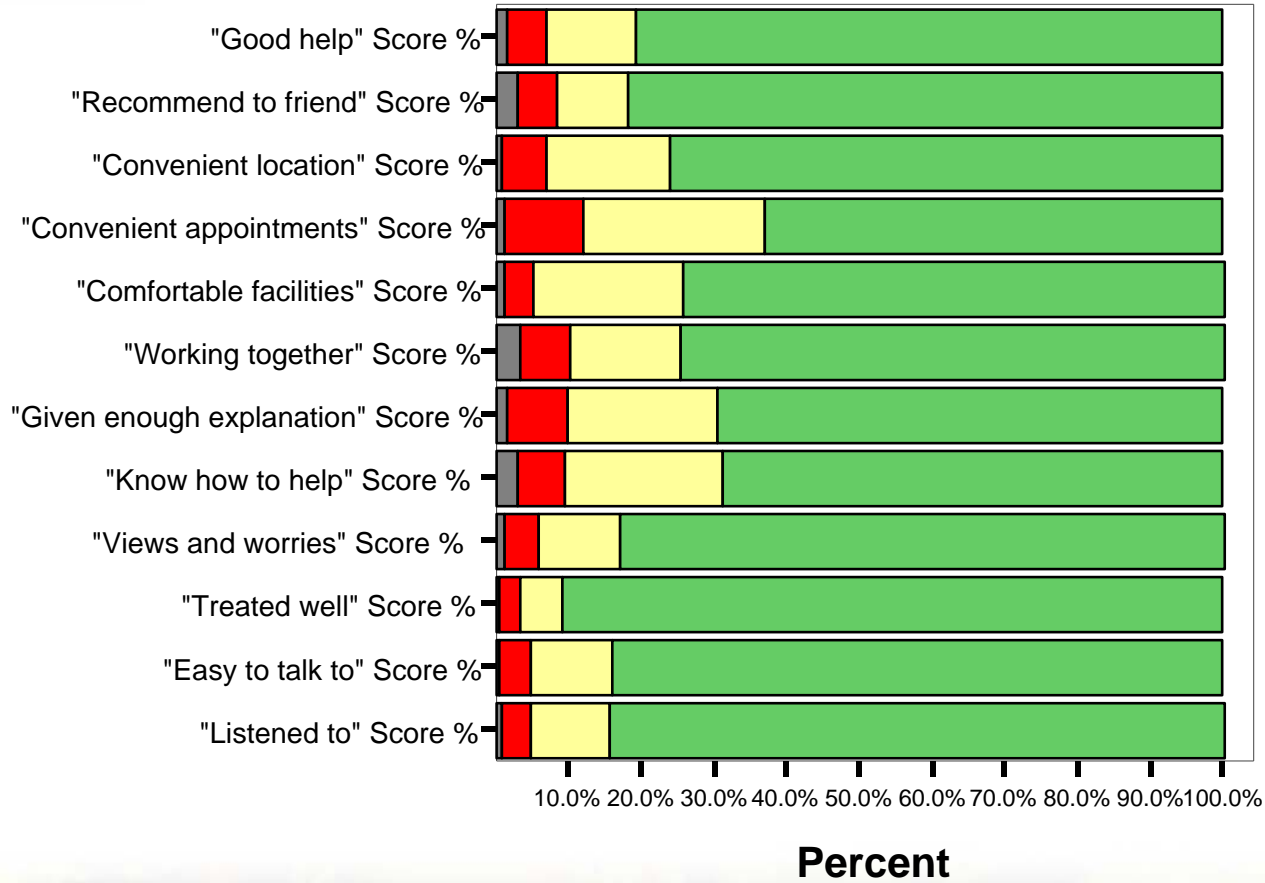
Satisfaction with Service *Parent* Perspective (CHI-ESQ)



WEAK DATA:
Interpret with caution

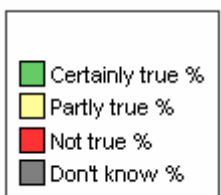


All CORC *N=3555



* There are a range of Ns for each item, please see [table](#)

Satisfaction with Service *Child* Perspective (CHI-ESQ)



WEAK DATA:
Interpret with caution



All CORC *N=2119



Percent

* There are a range of Ns for each item, please see [table](#)
Last edited: 20/11/09

Difficulties at Outset and Change in difficulties 6 months later (CGAS)

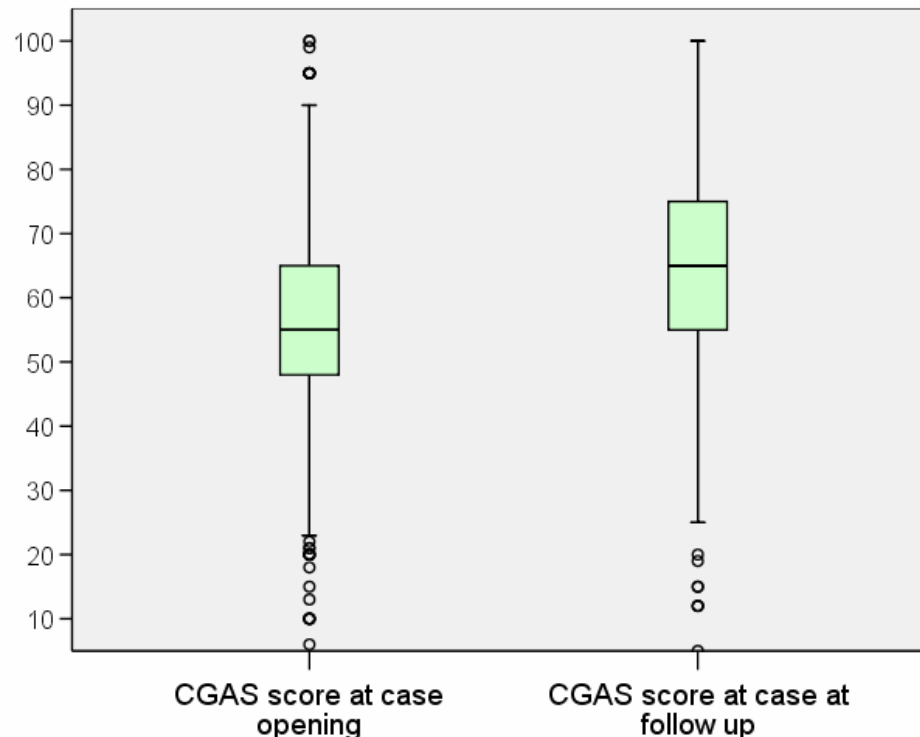
[About Box Plots](#)

PRACTITIONER View

WEAK DATA:
Interpret with
caution



All CORC N=5781 (completion of *both* Time 1 and Time 2 CGAS)



[Click here for tables](#)

Goals Based Outcomes

All CORC N=88 (paired scores for Time 1 and Time 2)

WEAK DATA:
Interpret with caution

